

2000—2001 ANNUAL REPORT

Tuscola County Health Department

April 2002

To Residents and Community Partners in Tuscola County from Gretchen Tenbusch, R.N., M.S.A., Health Officer

On behalf of the Tuscola County Health Department employees and Board of Health, I am pleased to present this Annual Report. This report is intended to highlight accomplishments for fiscal year 2000-2001, including available program services and service delivery outcomes. The Health Department partnered with Health Delivery, Inc. to maintain the presence of a prenatal clinic at our facility. In January, 2001, the Breast & Cervical Cancer Control Program clinic returned to the Health Department. With the retirement of Janet Labiak, M S N , Nursing Administrator in January

2001, the Nursing Division was re-organized into two departments, each headed by an Assistant Nursing Director. The Community Health Assessment & Improvement workgroup conducted the ACTS (Assessing Community Traffic Safety) Survey for Tuscola County. The survey resulted in the development of a Traffic Safety Action Plan to address three areas of concern. These areas include: 1) Younger drivers: Excessive 18-20 year old Crash Profile & Excessive 15-17 year old Crash profiles; 2) Drinking and Driving; 3) Excessive Older Driver (70+) Crash Profile. The Health Department is very fortunate to have a

dedicated staff and a supportive Board of Health and Commissioners. It is the Health Department's intention to continue to meet the needs of Tuscola County residents through assessment, planning, adaptation, foresight and collaborations. Thank you for your interest in the Tuscola County Health Department. I hope you find this report both interesting and informative. We look forward to serving you and we thank you for your continued support.

Mission

We are dedicated to promoting and protecting the health of Tuscola County residents by providing a wide range of quality human services.

Vision

We collaborate with the community and each other to provide an innovative approach to health promotion and protection



BOARD OF HEALTH MEMBERS

Eileen Hiser
Chairperson

Beverly Daily
Vice-Chairperson

Elaine LaJoie
Secretary

Norma Bates

Edward Scollon

Fiscal Division

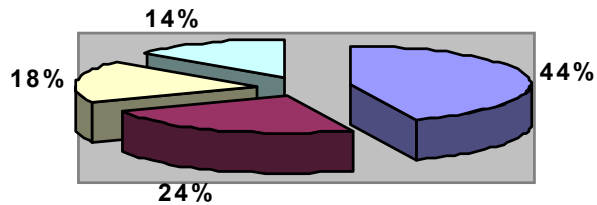
Bonnie Sammons, Fiscal Manager
Doraine Caverly, Account Clerk
Nancy McCollum, Billing Clerk



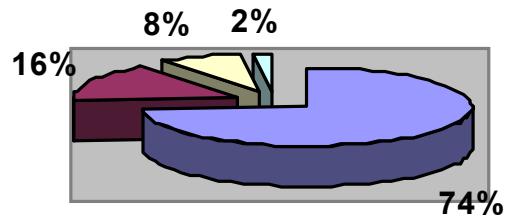
Tuscola County Health Department's Fiscal Division performs all general accounting functions, including accounts receivable, accounts payable, budgeting, purchasing, payroll and financial reporting.

This agency's fiscal operation conforms to generally accepted accounting principles as applicable to government units.

Revenues	
State/Federal Grants	44%
Fees	24%
County Appropriations	18%
Other Resources	14%



Expenses	
Personal Health	74%
Environmental Health	16%
Administration	8%
Other	2%



2000-2001

BUDGET

\$1,964,037

Management Information Systems Division

Carol Stephens, MIS Manager

The mission of the MIS Division is to make available comprehensive and high quality services to meet the information technology needs of the health department.

The agency website (www.tuscola.localhealth.net) is continuously maintained and updated, in an attempt to provide Tuscola County citizens the most up-to-date information possible.

The MIS Division has the continuous job of keeping all agency programs up to date with the most current software applications, backing up the system, monitoring for viruses and helping staff to create and run reports as needed.

Currently we maintain 2 file servers, 42 workstations, 8 laptop computers, and 10 shared printer stations. A variety of software programs used within the agency are continuously monitored and upgraded as needed.



Office of Veteran Affairs

Lawrence Spiekerman, Director



The County Office of Veteran Affairs is the first point of contact by veterans and their families who seek assistance with Federal, State and County benefits. Monetary benefits payable to veterans and their dependents may be classified into four general categories: Compensation, Dependence and Indemnity Compensation, Pension and Retirement Pay. Other major benefit programs include: Education Assistance to Children, Wives and Widows, and Veterans, Vocational Rehabilitation, Hospitalization, Home Loans, Insurance Burial Benefits, Tuscola County Soldiers & Sailors Relief Fund, and Michigan Veteran's Trust Fund. The Veteran's population in Tuscola County is 5,261, with total expenditures for FY2001 of \$4,167,440. Tuscola County provides a full time Veteran's Affairs Director to help coordinate benefits and services for the Veteran's of Tuscola County.

Tuscola County VA Statistics for 2001

Office Visits	585
Claims Filed	527
House Calls	8
Trust Fund Applications	38
Amount Granted	\$19,204
Soldiers/Sailors Relief Applications	74
Amount Granted	\$10,298

Maternal Child Health Services

Kathy Klein, R.N., Assistant Nursing Director of Maternal Child Health

Children's Special Health Care Services (CHSCS)

Provides financial assistance and case management to children ages birth to 21 years of age who have a chronic health problem or handicapping condition. Children can be sent on a free diagnostic visit to an enrolled specialist.

Caseload 345

Child Well Being

To determine, during a series of assessments, the safety status of children in the home. To provide families with information on Medicaid, Food Stamps, WIC, Immunizations, Day Care and other community resources for which families may be eligible.

Individuals Served 14

Early On

Assists with provision and coordination of services to children and families from birth to 3 years, who have special medical, physical or developmental needs.

Individuals Served 30

Early Periodic Screening Diagnosis & Treatment

Provides health and development screening and referral for individuals from birth to age 21 who are currently covered by Medicaid. Immunizations, hearing, vision and lead screening, and Denver Developmental testing offered. The Well Child Clinic (WCC) provides health screening for individuals without Medicaid for a small fee.

EPSDT Individuals Screened 334

WCC Individuals Screened 51

Outreach (Healthy Kids/ MICHild Applications)

Assists with enrollment in Healthy Kids or MICHild insurance for those under the age of 19 and/or pregnant. Application assistance also provided for the Low Income Families (LIF) Program. Also, assistance to complete health visits for infants and children on Medicaid.

Individuals Served/ Applications 522

Other Assistance 622

Prenatal Clinic Services

Health Delivery, Inc. took over the Prenatal Clinic services, from Bay Medical Group Women's Care on June 1, 2001, using the same nurse midwives. Patients see midwives for prenatal care and education. Women deliver at Bay Medical Center, Bay City. Program is available to all women in Tuscola County.

Individuals served (combined) 141

Touching Lives of Children (TLC)

TLC is for pregnant women and families with children from birth through three years of age. It focuses on all areas of life such as: Family, Nutrition, Parenting, Growth and Development, Problem Solving, Personal Time. TLC also offers Center Based Services at Highland Pines School. Fun times and learning activities for both parent and children.

Individuals Served 119





Women, Infants & Children (WIC)

WIC offers nutrition education and coupons for supplement food for children under the age of five and pregnant or nursing women. Families must meet income guidelines.

Caseload 1,464

March of Dimes

Visits made to parents of newborns, especially with complications and special problems. Other visits may be made to families of children with health risks and special needs.

Individuals Visited 6

Phone/Mail Contacts 56
Program ended 12/31/01

Maternal/Infant Support Services

Maternal Support Services provides visits throughout the pregnancy and up to two months postpartum to assess and teach about pregnancy, childbirth, child care and parenting. Client must be Medicaid Eligible or enrolled in MOMS (non-Medicaid MICH-Care Program). Infant Support Services include home visits for infants up to one year who are eligible for Medicaid. Includes assessment of child's development, nutrition and social needs.

Individuals Served 232

School-Based Programs

Hearing and Vision Screenings are provided by trained technicians in area schools for preschool and school-aged children.

Hearing—Individuals Screened 4,064

Vision—Individuals Screened 5,329

Maternal Child Health (MCH)

Referrals are received from doctors, hospitals after delivery. Referrals and birth abstracts are screened for risk factors by phone or mail and referred to other services as needed. Congratulation letters are sent to new mothers.

Referrals 563

Mail contacts 375

Immunizations

Reduces vaccine preventable diseases by providing free or affordable immunizations to all people from birth through adulthood.

Client's Immunized 4,807

Flu Vaccine 1,226

Pneumococcal Vaccine 50

TB Skin Tests 447



Preventive Health Services

Ann Hepfer, R.N., Nursing Director

Reproductive Health Family Planning

Provides counseling, birth control supplies, pregnancy testing, and sexually transmitted disease information to men and women of child bearing age.

Individuals Served **1675**



Geriatric Services

Provides a community based program focusing on maintaining independence, preventing risks to health and well being and developing strategies to meet the health and medical needs of mature adults.

Services Provided **36**

Educational Encounters **19**

Abstinence Program

Through a grant from MDCH, we promote abstinence among young people across the county. The goal of the Abstinence Program is to positively impact the lives of youth ages 9-17 and their families through health promotion. These activities promote abstinence from sexual activity and discourage any illegal use or misuse of alcohol, tobacco, and other drugs in the community. This is accomplished through After School Programs and Day Camps.

Communicable Disease

The philosophy of the Communicable Disease (CD) Program is to reduce the incidence of communicable diseases and infections through investigation, data collection/entry and analysis, case management, education, treatment, referral for care, feedback to providers, reporting of illnesses, and enforcement of the laws, rules, regulations and requirements in accordance with the Michigan Public Health Code Act 368 of 1978 and Michigan's Communicable Disease Rules, February, 2001.

Campylobacter	3	Hepatitis A	1
Chickenpox	52	Hepatitis B	1
Cryptosporidiosis	1	Histoplasmosi	1
E Coli 0157	1	Kawaski	1
Flu Like Disease	1324	Lyme Disease	1
Giardiasis	5	Meningitis Aseptic	20
Guillain Bar	2	Salmonellosis	3
Hep C Acute	2	Shigellosis	1
Hep C Chronic	2	Strep Invasive	1
Hep C Unknown	4	TB 1 Active Case 4 converter/reactor	Animal Bites: 38 1 Rabies (Bat)

Environmental Health Services

Edward L. Kimbrue, R.S., Director of Environmental Health

Staff: Kent Singer, R.S., Jerry White, R.S., Tip MacGuire, R.S., Marsha Clark, Clerk II

Adverse environmental factors have a direct influence on humans. Impacts can be disease transmission through exposure to pathogenic organisms, or by exposure to toxins having a physiological effect on humans. Lesser environmental factors such as living conditions in a home can effect the overall well-being of the persons subjected to the given environment. As a member of the public health team, environmental health advocates and promotes disease prevention.

Goals are met through the enforcement of regulations and programs developed to not only protect public health, but to also control adverse environmental factors. Programs and regulations are grouped into the categories of: Water, Shelter, Food, Waste and Community Health. The following statistics falling under these categories reflect the services provided in fiscal year 2000-2001.

Food Service Program

To meet the public's expectations of safe and wholesome foods being served in any given establishment, regular inspections are conducted in all food service establishments in Tuscola County. Efforts in this program are key elements in assuring the meals we consume outside of the home are safe.

Fixed Food Service Establishments	160
Fixed Food Service Inspections	284
Transitory Food Inspections	3
Vending Inspections	8
Temporary Food Inspections	37
Foodborne Illness Investigations	11



Wastewater Management

Contact with raw or improperly treated sewage is the major method by which diseases are spread. Therefore, the proper disposal and treatment of sewage is a critical aspect of protecting public health. Under state and local code enforcement the Environmental Health Division performs permitting requirements, site evaluations, and installation inspections of all on-site sewage systems within Tuscola County.

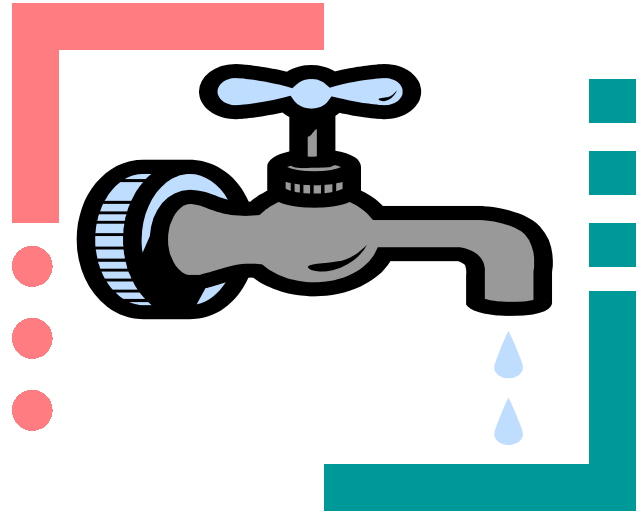
On-site Sewage Disposal Permits	433
On-Site Sewage Disposal Final Inspections	528
On-Site Sewage Permits—Commercial	2
On-Site Sewage Final Inspections—Commercial	2



Surface and Groundwater Control

Basic to human life and public health philosophy, is the provision that a safe and adequate water supply is available to the individual and public. To this end, all wells in Tuscola County are installed under permit with well location being reviewed, proper isolations required, final inspections conducted and water sampling performed to determine water quality.

Well Permits Issued	445
Final Inspections	337
Complaints Investigated	4
Operation/Maintenance Evaluations	80



Environmental Quality

Lesser activities important to health protection cover a myriad of programs such as: Shelter, Public Swimming Pools, Mobile Home Parks, Hazardous Waste, Solid Waste, Indoor and Outdoor Air, and Campgrounds.

Campground Inspection	5	Adult/Child Care Facilities	27
Mobile Home Park Inspections	14	Solid Waste	32
Public Swimming Pool Inspections	10	Hazardous Waste	6
Indoor/Outdoor Air	18	Animal Control	20
		Residential Dwellings	4

