



ANNUAL REPORT FY-2003-2004

TUSCOLA COUNTY HEALTH DEPARTMENT

1309 CLEAVER RD., SUITE B
CARO, MI 48723-9135

Ph: (989) 673-8114

Fax: (989) 673-7490

Website:

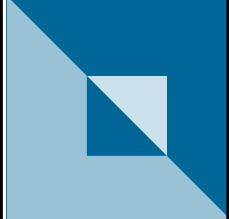
www.tchd.us

TUSCOLA COUNTY HEALTH DEPARTMENT EMPLOYEES

| NAME | TITLE | YEARS OF SERVICE |
|-----------------------|---|------------------|
| Anthes, Beth | PHN II | 4 |
| Balzer, Sandy | Hearing/Vision Technician | 15 |
| Barrons, Deb | Program Clerk II | 12 |
| Bellsky, Sally | PHN II | 12 |
| Brinkman, Marcy | PHN II | 6 |
| Caverly, Doraine | Account Clerk | 26 |
| Carr, Julie | Abstinence Program Assistant Coordinator | 4** |
| Clark, Marsha | Program Clerk II | 30 |
| Delorenzo, Janet | Clinic Assistant/Clerk II | 18 |
| Dickinson, Janelle | Program Clerk II | 15 |
| Dunham, Patty | Clinic Assistant/Clerk II | 28 |
| Germain, Kelly | PHN II/Program Coordinator | 13 |
| Gutierrez, Elva | Clinic Assistant/Clerk II | 12 |
| Harrington, Lorraine | Registered Dietitian | 18 |
| Hepfer, Ann | Nursing Administrator | 16 |
| Hicks, Carol | Administrative Secretary | 29 |
| Johnson, Sue | Clinic Assistant/Clerk II | 13 |
| Jones, Nancy | PHN II | 2 |
| Kapa, Judy | Nurse Practitioner | 13 |
| Kile, Ruth | Program Clerk II | 12 |
| Kimbrue, Ed | Environmental Health Director | 1* |
| Klein, Kathy | Assistant Nursing Director | 15 |
| MacGuire, Tip | Registered Sanitarian III Department Coordinator | 11 |
| McCollum, Nancy | Billing Clerk | 25 |
| Mika, Sharon | P.H. Emergency Preparedness Coordinator | 2 |
| Milazzo, Dianne | Clinic Assistant/Clerk II | 4 |
| Peters, Lugene | Program Clerk II | 14 |
| Sammons, Bonnie | Fiscal Manager | 30 |
| Shaw, Chris | Clinic Assistant/Clerk II | 23 |
| Singer, Kent | Registered Sanitarian III | 9 |
| Smallwood, Dennis, DO | Medical Director | 17* |
| Spiekerman, Larry | Veteran Affairs Director | 14 |
| Stephens, Carol | MIS Manager | 29 |
| Suber, Christina | Social Worker | 5 |
| Tenbusch, Gretchen | Health Officer | 16 |
| Villalobos, Kristi | PHN II/Department Coordinator | 6 |
| White, Jerry | Registered Sanitarian III | 13 |
| Williams, Karen | Clinic Assistant/Clerk II | 4 |

*Contractual Employee

** Specially Funded Employee

| | | |
|--|--|--------------------|
|  | ANNUAL REPORT Tuscola County Health Department | FISCAL YEAR |
| | | 2003-2004 |

To the Board of Health, Board of Commissioners, Residents and Community Partners in Tuscola County.

On behalf of the Tuscola County Health Department staff, I am pleased to present this Annual Report. This report is intended to highlight accomplishments for fiscal year 2003-2004, including available program services and service delivery outcomes.

Fiscal Year 2003-2004 was a year of partnerships. The Health Department partnered with area hospitals and Human Service Coordinating Councils to develop the Thumb Rural Health Network. The purpose of the Thumb Rural Health Network is to improve and expand available healthcare services and to promote the overall health and wellness of the residents of Huron, Sanilac and Tuscola Counties. The first project conducted by this Network was a Behavioral Risk Factor Survey of the residents of Huron, Sanilac and Tuscola Counties. Based on the results of this survey, new programs will be sought to meet the needs of our residents. The Health Department also partnered with hospitals, EMS, Emergency Management, Fire, Police and other Human Service providers to prepare Tuscola County to respond to a disaster or community emergency. The Health Department participated in numerous drills at local, regional and state levels.

The Health Department conducted a large scale communicable disease investigation for Tuberculosis (TB) as a result of an active case of TB in an area school teacher. This resulted in administering over 700 TB skin tests to contacts of this individual and the provision of case management or

monitoring of 53 individuals. The Health Department worked closely with the school system in containing the spread of this disease. The Health Department was given an award of excellence from the Michigan Department of Community Health for the prompt and efficient handling of the situation.

In November 2003, the Tuscola County Health Department received their Certificate of Accreditation with Commendations from the Michigan Department of Community Health. This achievement was possible due to the hard work and dedication of the Health Department staff and the involvement of the Board of Health and Board of Commissioners.

The Health Department will continue to protect and promote the health of the residents of Tuscola County through surveillance, assessment, planning and collaboration. I hope you find this report both interesting and informative. We look forward to serving your needs and we thank you for your continued support.

Sincerely,

Gretchen Tenbusch, R.N., M.S.A.
 Health Officer



Mission

We are dedicated to promoting and protecting the health of Tuscola County residents by providing a wide range of quality human services

Vision

We collaborate with the community and each other to provide an innovative approach to health promotion and protection

BOARD OF HEALTH
MEMBERS

Eileen Hiser, Chairperson
 Beverly Daily, Secretary
 Elaine LaJoie, Vice-Chair
 Don McLane
 Edward Scollon

Fiscal Division

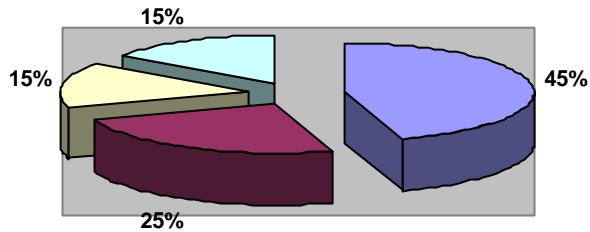
Bonnie Sammons, Fiscal Manager
Doraine Caverly, Account Clerk
Nancy McCollum, Billing Clerk



Tuscola County Health Department's Fiscal Division performs all general accounting functions, including accounts receivable, accounts payable, budgeting, payroll, financial reporting and internal control.

The accounting policies of the Tuscola County Health Department conform to generally accepted accounting principles as applicable to government units.

| Revenues | |
|-----------------------|-----|
| State/Federal Grants | 45% |
| Fees | 25% |
| County Appropriations | 15% |
| Other Resources | 15% |

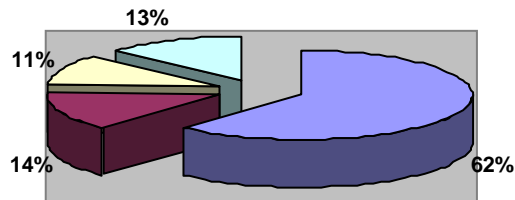


2003-2004

BUDGET

\$2,391,188

| Expenses | |
|----------------------|-----|
| Personal Health | 62% |
| Environmental Health | 14% |
| Administration | 11% |
| Other | 13% |



Management Information Systems Division

Carol Stephens, MIS Manager

The mission of the MIS Division is to make available comprehensive and high quality services to meet the information technology needs of the health department.

The agency website (www.tchd.us) is continuously maintained and updated, in an attempt to provide Tuscola County citizens the most up-to-date information possible.

The MIS Division has the continuous job of keeping all agency programs up to date with the most current software applications, backing up the system, monitoring for viruses and helping staff to create and run reports as needed.

Currently we maintain 3 file servers, 42 workstations, 8 laptop computers, and 10 shared printer stations. A variety of software programs used within the agency are continuously monitored and upgraded as needed.



Office of Veteran Affairs

Lawrence Spiekerman, Director

The County Office of Veteran Affairs is the first point of contact by veterans and their families who seek assistance with Federal, State and County benefits. Monetary benefits payable to veterans and their dependents may be classified into four general categories: Compensation, Dependence and Indemnity Compensation, Pension and Retirement Pay. Other major benefit programs include: Education Assistance to Children, Wives and Widows, and Veterans, Vocational Rehabilitation, Hospitalization, Home Loans, Insurance Burial Benefits, Tuscola County Soldiers & Sailors Relief Fund, and Michigan Veteran's Trust Fund. The Veteran's population in Tuscola County is 5,261, with total expenditures for FY2001 of \$4,167,440. Tuscola County provides a full time Veteran's Affairs Director to help coordinate benefits and services for the Veterans of Tuscola County.



Tuscola County VA Statistics for the year 2004

| | |
|---|-----------------|
| Office Visits | 464 |
| Claims Filed | 417 |
| House Calls | 8 |
| Trust Fund Applications | 18 |
| Amount Granted | \$4,533 |
| Soldiers/Sailors Relief Applications | 94 |
| Amount Granted | \$12,108 |

Health Services

Children's Special Health Care Services (CSHCS)

Provides financial assistance and case management to children ages birth to 21 years of age who have a chronic health problem or handicapping condition. Children can be sent on a free diagnostic visit to an enrolled specialist.

Caseload 307

Touching Lives of Children (TLC)

TLC is for pregnant women and families with children from birth through three years of age. It focuses on all areas of life such as: Family, Nutrition, Parenting, Growth and Development, Problem Solving, Personal Time. TLC also offers Center Based Services at Highland Pines School. Fun times and learning activities for both parent and children.

Individuals Served 121

Early On

Assists with provision and coordination of services to children and families from birth to 3 years, who have special medical, physical or developmental needs.

Individuals Served 17

Early Periodic Screening Diagnosis & Treatment (EPSDT)/Let's Get Physical

Provides health and developmental screening and referral for individuals from birth to age 21 who are currently covered by Medicaid. Immunizations, hearing, vision, lead screening, and Denver Developmental testing offered. The Well Child Clinic (WCC) provides health screening for individuals without Medicaid for a small fee.

EPSDT Individuals Screened 166

WCC Individuals Screened 6

Other Assistance 532

Breast & Cervical Cancer Screening

This program provides free Mammograms and Pap Smears for women ages 40-64 who meet the eligibility criteria. During the fiscal year 03-04 eighty seven (87) women received mammograms and pap smears. Women who qualify for this program are also eligible for the Wise Woman Program which promotes a heart healthy lifestyle. It offers cholesterol and blood pressure check-ups along with counseling and classes to help lower women's risk for heart disease.

Prenatal Clinic Services

Health Delivery, Inc. provides the Prenatal Clinic services. Patients see midwives for prenatal care and education. Women deliver at Bay Medical Regional Center, Bay City. Program is available to all women in Tuscola County.

Individuals served 121



Health Services

Women, Infants & Children (WIC)

WIC offers nutrition education and coupons for supplemental food for children under the age of five and pregnant or breast feeding women. Families must meet income guidelines.

Caseload 1586

School-Based Programs

Hearing and Vision Screenings are provided by trained technicians in area schools for preschool and school-aged children.

Hearing 3252

Vision 5023

Maternal/Infant Support Services

Maternal Support Services provides visits throughout the pregnancy and up to two months postpartum to assess and teach about pregnancy, childbirth, child care and parenting. Client must be Medicaid Eligible or enrolled in MOMS (non-Medicaid MICH-Care Program). Infant Support Services include home visits for infants up to one year who are eligible for Medicaid. Includes assessment of child's development, nutrition and social needs.

Individuals Served 284

Maternal Child Health (MCH)

Referrals are received from doctors and hospitals after delivery. Referrals and birth abstracts are screened for risk factors contacted by phone or mail, and referred to other services as needed. Congratulation letters are sent to new mothers.

Mail contacts 503

Immunizations

Reduces vaccine preventable diseases by providing free or affordable immunizations to all people from birth through adulthood.

Clients Immunized 3007

TB Control Program

The goals and objectives for the TB Control Program are to reduce the tuberculosis mortality and morbidity in the residents of Tuscola County. The goals are accomplished by providing investigation, diagnosis and treatment of Tuberculosis.

TB Skin Tests 527

Preventative Treatment 28

Active Reported Cases 5



Health Services Continued

Reproductive Health Family Planning

Provides counseling, birth control supplies, pregnancy testing, and sexually transmitted disease information to men and women of child bearing age. Clients are seen by appointment and we offer two late clinics a month. We bill all insurances. We take into account client age, family size and income to determine the fee according to federal poverty guidelines.

Individuals Served **1392**

Geriatric Services

Provides a community based program focusing on maintaining independence, preventing risks to health and well being and developing strategies to meet the health and medical needs of mature adults.

Services Provided **42**

Presentations **14**
Participants **187**

Flu Vaccine **1731**

Pneumococcal Vaccine **110**

STI

Our goal is to reduce the number of Sexually Transmitted Infections through diagnosis, treatment and education. We take into account client age, family size and income to determine the fee according to federal poverty guidelines.

Abstinence Program

Through a grant from MDCH, we promote abstinence among young people across the county. The goal of the Abstinence Program is to positively impact the lives of youth ages 9-17 and their families through health promotion. These activities promote abstinence from sexual activity and discourage any illegal use or misuse of alcohol, tobacco, and other drugs in the community. This is accomplished through After School Programs and Summer Day Camps.

Tobacco Reduction

Tobacco reduction seeks to decrease tobacco related morbidity and mortality in Tuscola County through prevention efforts. We maintain a coalition to assist with proactive efforts such as: educating the public, collaborating with local legislators, encouraging enforcement of existing laws, assisting with policy change, etc.

HIV/AIDS

Tuscola County Health Department provided free anonymous counseling and testing as well as referral and partner notification assistance, this program is earmarked to end December, 2004.

Communicable Disease

The philosophy of the Communicable Disease (CD) Program is to reduce the incidence of communicable disease and infections through investigation, data collection/entry and analysis, case management, education, treatment, referral for care, feedback to providers, reporting of illnesses, and enforcement of the laws, rules, regulations and requirements in accordance with the Michigan Public Health Code Act 368 of 1978 and Michigan's Communicable Disease Rules, February, 2001.

| | | | |
|---------------------|-----|--------------------|-----------|
| Campylobacter | 5 | Hepatitis A | 0 |
| Chickenpox | 16 | Hepatitis B | 3 |
| Cryptococcus | 1 | Histoplasmosi | 0 |
| EColi 0157 | 2 | Kawasaki | 2 |
| Flu Like Disease | 437 | Legionellosis | 1 |
| Giardiasis | 3 | Meningitis Aseptic | 19 |
| Guillain Barre | 0 | Salmonellosis | 3 |
| Hepatitis C Acute | 2 | Shigellosis | 0 |
| Hepatitis C Chronic | 2 | Strep Invasive | 0 |
| Lyme Disease | 1 | TB Active Case | 5 |
| Animal Bites | 67 | Rabies (Bats) | 1 treated |

Environmental Health Services

Edward L. Kimbrue, R.S., Director of Environmental Health

Staff: Kent Singer, R.S., Jerry White, R.S., Tip MacGuire, R.S., Dept. Coord., Marsha Clark, Clerk II

Adverse environmental factors have a direct influence on humans. Impacts can be disease transmission through exposure to pathogenic organisms, or by exposure to toxins having a physiological effect on humans. Lesser environmental factors such as living conditions in a home can effect the overall well-being of the persons subjected to the given environment. As a member of the public health team, environmental health advocates and promotes disease prevention.

Goals are met through the enforcement of regulations and programs developed to not only protect public health, but to also control adverse environmental factors. Programs and regulations are grouped into the categories of: Water, Shelter, Food, Waste and Community Health. The following statistics falling under these categories reflect the services provided in fiscal year 2003-2004.

Food Service Program

To meet the public's expectations of safe and wholesome foods being served in any given establishment, regular inspections are conducted in all food service establishments in Tuscola County. Efforts in this program are key elements in assuring the meals we consume outside of the home are safe.

| | |
|------------------------------------|------------|
| Fixed Food Service | 160 |
| Fixed Food Service | 455 |
| Transitory Food Inspections | 6 |
| Vending Inspections | 12 |
| Temporary Food | 88 |
| Foodborne Illness | 5 |

Wastewater Management

Contact with raw or improperly treated sewage is the major method by which diseases are spread. Therefore, the proper disposal and treatment of sewage is a critical aspect of protecting public health. Under state and local code enforcement the Environmental Health Division performs permitting requirements, site evaluations, and installation inspections of all on-site sewage systems within Tuscola County.

| | |
|--|------------|
| On-site Sewage Disposal Permits | 309 |
| On-Site Sewage Disposal Inspections | 626 |
| On-Site Sewage Permits Commercial | 1 |
| On-Site Sewage Inspections Commercial | 6 |



Surface and Groundwater Control

Basic to human life and public health philosophy, is the provision that a safe and adequate water supply is available to the individual and public. To this end, all wells in Tuscola County are installed under permit with well location being reviewed, proper isolations required, final inspections conducted and water sampling performed to determine water quality.

Well Permits Issued **360**

Final Inspections **278**

Complaints Investigated **4**

Operation/Maintenance Evaluations **81**



Environmental Quality

Lesser activities important to health protection cover a myriad of programs such as: Shelter, Public Swimming Pools, Mobile Home Parks, Hazardous Waste, Solid Waste, Indoor and Outdoor Air, and Campgrounds.

| | | | |
|-----------------------------|-----------|------------------------------------|-----------|
| Campground | 21 | Adult/Child Care Facilities | 50 |
| Mobile Home Park | 19 | Solid Waste | 23 |
| Public Swimming Pool | 17 | Hazardous Waste | 3 |
| Indoor/Outdoor | 20 | Animal Control | 23 |
| Radon | 31 | Residential Dwellings | 1 |
| Ground Water | 34 | | |





**Tuscola County
Health Department
Dennis A. Smallwood, D.O.
Medical Director**

Like all phases of Government Public Health finds itself cash strapped in our ever consuming battle to provide services in the face of decreasing funds. Unfortunately, the number of uninsured individuals needing health care services continues to grow, leading to an ever increasing need for government subsidy. Prevention however, is “still where it is at”. Defining one case of breast cancer early enough to effect a cure negates the need to invest hundreds of thousands of dollars in a case defined too late in its course.

Changing health behaviors pays remarkable dividends as well, yet many in our society continue to make bad choices when it comes to eating habits, smoking, alcohol consumption or even wearing seat belts.

We look forward to continuing to work with our citizenry to provide as healthy an environment as possible for our children to grow and thrive.

WEST NILE VIRUS TRACKING

Mosquito Abatement and the Health Department worked closely in a coordinated effort to control the spread of the West Nile Virus (WNV) in humans. A web-based system for reporting of dead birds (Corvids or Crow family birds) was used to track the WNV infected birds. This system allowed for rapid reporting of the sightings, and provided a means for collecting the appropriate birds for WNV testing. The testing was done through tracking the county zip codes. Once a bird tested positive for WNV in that zip code—no other birds were tested from that zip code, but the information on the sightings was continued. Calculations of the number of dead birds per square mile were then used to estimate the level of risk for human infection in that area. Tuscola County submitted 18 birds (corvids) for testing and 5 birds tested positive. There was one human case of Human West Nile Virus reported in Tuscola County. For more information on West Nile Virus go to www.michigan.gov/emerging_diseases and select West Nile Virus.

PUBLIC HEALTH EMERGENCY PREPAREDNESS

Sharon Mika, Department Coordinator



Fiscal year 2003-2004 was a year for exercises and continued planning with local, regional and state partners. On Nov. 1, 2003 the public health department participated in a full scale county exercise that took place at the Caro Airport. This exercise tested the response of the Environmental Health staff and their knowledge and mitigation of a dangerous herbicide spill. Public health staff coordinated the support services with area hospitals.

May 12, 2004 tested the communication skills and dissemination of public information with an exercise drill with the Caro Community Schools. This scenario was the delivery of letters containing a suspicious powder.

On June 15, 2004 the county biological terrorism tabletop exercise was attended by seven members of the health department. This exercise tested the activation of the TCHD plan to identify, respond to and mitigate the effects of a mass exposure to a biological agent. The exercise involved the response of all the annex holders of the county Emergency Action Guidelines (EAG's). The purpose was to exercise the Incident Command/Unified Command system and to feed realistic information to the Emergency Operation Center (EOC) staff.

A Functional exercise on August 26, 2004 using the Modular Integrated-Knowledge Exercise Simulator (M.I.K.E.S) proved real and exciting. This system allowed eight public health staff along with other agencies to experience hands on approach requiring rapid and effective responses from trained personnel in a highly stressful environment.

The year ended with a state wide Smallpox tabletop exercise on Oct. 4, 2004. This exercise brought all health departments in the region to one location. Five staff members along with regional partners evaluated the local and regional public health capacities and procedures to prevent and contain the spread of smallpox in the community. An additional goal of this exercise was to utilize the Risk Communication Plan and responding to the "special needs population".

Public health knows their roles and responsibilities and it shows in their participation of local and regional exercises. As we continue to train and exercise, public health stands ready for any event natural or man-made.