



ANNUAL REPORT
Tuscola County Health Department

FISCAL YEAR

2001-2002

To the Board of Health, Board of Commissioners, Residents and Community Partners in Tuscola County.

From: Gretchen Tenbusch, R.N., M.S.A., Health Officer

On behalf of the Tuscola County Health Department employees and Board of Health, I am pleased to present this Annual Report. This report is intended to highlight accomplishments for fiscal year 2001-2002, including available program services and service delivery outcomes.

The Health Department is very fortunate to have a dedicated staff and a supportive Board of Health and Commissioners.

Fiscal Year 2001-02 was a year of new opportunity and change due to financial issues and with the encouragement of Michigan Department of Community Health, the Huron, Tuscola and Sanilac County Health Departments Associated to share the Medical Director and Huron and Tuscola County Health Departments associated to share the Health Officer.

In, September 2002 the Health Department went through an Accreditation Site Review and was granted accreditation with accommodation. Also, Emergency Preparedness came to the forefront of health department services after September 11, 2001 and the Anthrax Threat.

It is the Health Department's intention to continue to meet the needs of Tuscola County residents through assessment, planning, adaptation, foresight and collaborations.

Thank you for your interest in the Tuscola County Health Department. I hope you find this report both interesting and informative. We look forward to serving you and we thank you for your continued support.

Mission

We are dedicated to promoting and protecting the health of Tuscola County residents by providing a wide range of quality human services.

Vision

We collaborate with the community and each other to provide an innovative approach to health promotion and protection



BOARD OF HEALTH

MEMBERS

Eileen Hiser
Chairperson

Beverly Daily
Vice-Chairperson

Elaine LaJoi
Secretary

Norma Bates
Edward Scollon

Fiscal Division

Bonnie Sammons, Fiscal Manager
Doraine Caverly, Account Clerk
Nancy McCollum, Billing Clerk

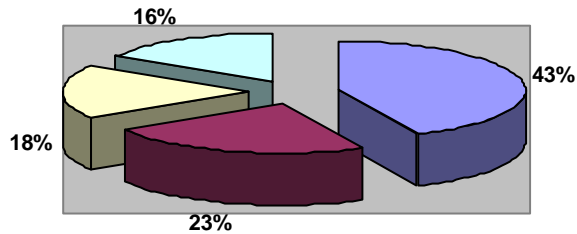


Tuscola County Health Department's Fiscal Division performs all general accounting functions, including accounts receivable, accounts payable, budgeting, purchasing, payroll and financial reporting.

This agency's fiscal operation conforms to generally accepted accounting principles as applicable to government units.

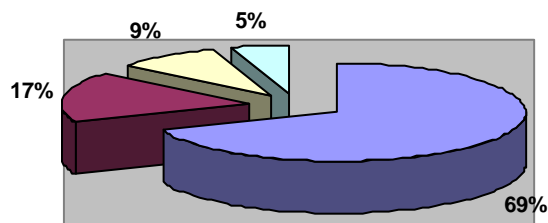
Revenues

State/Federal Grants	43%
Fees	23%
County Appropriations	18%
Other Resources	16%



Expenses

Personal Health	69%
Environmental Health	17%
Administration	9%
Other	5%



2001-2002

BUDGET

\$2,127,047



Environmental Health Services

Edward L. Kimbrue, R.S., Director of Environmental Health

Staff: Kent Singer, R.S., Jerry White, R.S., Tip MacGuire, R.S., Marsha Clark, Clerk II

Adverse environmental factors have a direct influence on humans. Impacts can be disease transmission through exposure to pathogenic organisms, or by exposure to toxins having a physiological effect on humans. Lesser environmental factors such as living conditions in a home can effect the overall well-being of the persons subjected to the given environment. As a member of the public health team, environmental health advocates and promotes disease prevention.

Goals are met through the enforcement of regulations and programs developed to not only protect public health, but to also control adverse environmental factors. Programs and regulations are grouped into the categories of: Water, Shelter, Food, Waste and Community Health. The following statistics falling under these categories reflect the services provided in fiscal year 2001-2002.

Food Service Program

To meet the public's expectations of safe and wholesome foods being served in any given establishment, regular inspections are conducted in all food service establishments in Tuscola County. Efforts in this program are key elements in assuring the meals we consume outside of the home are safe.

Fixed Food Service Establishments	160
Fixed Food Service Inspections	284
Transitory Food Inspections	2
Vending Inspections	9
Temporary Food Inspections	113
Foodborne Illness Investigations	11



Wastewater Management

Contact with raw or improperly treated sewage is the major method by which diseases are spread. Therefore, the proper disposal and treatment of sewage is a critical aspect of protecting public health. Under state and local code enforcement the Environmental Health Division performs permitting requirements, site evaluations, and installation inspections of all on-site sewage systems within Tuscola County.

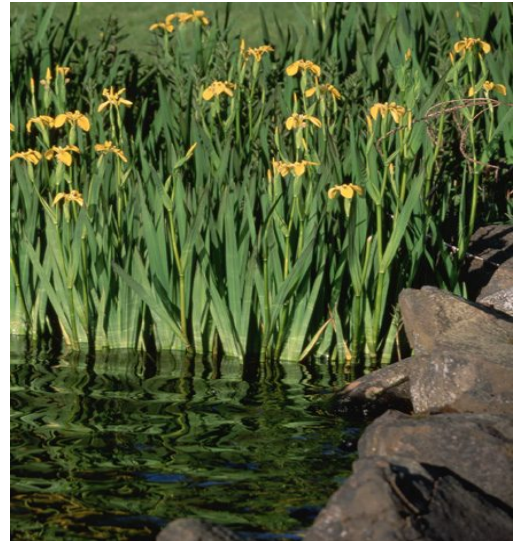
On-site Sewage Disposal Permits	351
On-Site Sewage Disposal Final Inspections	486
On-Site Sewage Permits Commercial	3
On-Site Sewage Final Insp. Commercial	3



Surface and Groundwater Control

Basic to human life and public health philosophy, is the provision that a safe and adequate water supply is available to the individual and public. To this end, all wells in Tuscola County are installed under permit with well location being reviewed, proper isolations required, final inspections conducted and water sampling performed to determine water quality.

Well Permits Issued	402
Final Inspections	386
Complaints Investigated	2
Operation/Maintenance Evaluations	78



Environmental Quality

Lesser activities important to health protection cover a myriad of programs such as: Shelter, Public Swimming Pools, Mobile Home Parks, Hazardous Waste, Solid Waste, Indoor and Outdoor Air, and Campgrounds.

Campground Inspection	24	Adult/Child Care Facilities	92
Mobile Home Park Inspections	29	Solid Waste	24
Public Swimming Pool Inspections	60	Hazardous Waste	9
Indoor/Outdoor Air	31	Animal Control	21
		Residential Dwellings	2



Management Information Systems Division

Carol Stephens, MIS Manager

The mission of the MIS Division is to make available comprehensive and high quality services to meet the information technology needs of the health department.

The agency website (www.tchd.us) is continuously maintained and updated, in an attempt to provide Tuscola County citizens the most up-to-date information possible.

The MIS Division has the continuous job of keeping all agency programs up to date with the most current software applications, backing up the system, monitoring for viruses and helping staff to create and run reports as needed.

Currently we maintain 3 file servers, 42 workstations, 8 laptop computers, and 10 shared printer stations. A variety of software programs used within the agency are continuously monitored and upgraded as needed.

Office of Veteran Affairs

Lawrence Spiekerman, Director



Tuscola County VA Statistics for the year 2002

Office Visits	585
Claims Filed	527
House Calls	8
Trust Fund Applications	38
Amount Granted	\$19,204
Soldiers/Sailors Relief Applications	74
Amount Granted	\$10,298

The County Office of Veteran Affairs is the first point of contact by veterans and their families who seek assistance with Federal, State and County benefits. Monetary benefits payable to veterans and their dependents may be classified into four general categories: Compensation, Dependence and Indemnity Compensation, Pension and Retirement Pay. Other major benefit programs include: Education Assistance to Children, Wives and Widows, and Veterans, Vocational Rehabilitation, Hospitalization, Home Loans, Insurance Burial Benefits, Tuscola County Soldiers & Sailors Relief Fund, and Michigan Veteran's Trust Fund. The Veteran's population in Tuscola County is 5,261, with total expenditures for FY2001 of \$4,167,440. Tuscola County provides a full time Veteran's Affairs Director to help coordinate benefits and services for the Veteran's of Tuscola County.



Health Services

Children's Special Health Care Services (CHSCS)

Provides financial assistance and case management to children ages birth to 21 years of age who have a chronic health problem or handicapping condition. Children can be sent on a free diagnostic visit to an enrolled specialist.

Caseload 345

Touching Lives of Children (TLC)

TLC is for pregnant women and families with children from birth through three years of age. It focuses on all areas of life such as: Family, Nutrition, Parenting, Growth and Development, Problem Solving, Personal Time. TLC also offers Center Based Services at Highland Pines School. Fun times and learning activities for both parent and children.

Individuals Served 126

Early On

Assists with provision and coordination of services to children and families from birth to 3 years, who have special medical, physical or developmental needs.

Individuals Served 30

Early Periodic Screening Diagnosis & Treatment

Provides health and development screening and referral for individuals from birth to age 21 who are currently covered by Medicaid. Immunizations, hearing, vision, lead screening, and Denver Developmental testing offered. The Well Child Clinic (WCC) provides health screening for individuals without Medicaid for a small fee.

EPSDT Individuals Screened 261

WCC Individuals Screened 34

Outreach (Healthy Kids/MiChild Applications)

Assists with enrollment in Healthy Kids or MiChild insurance for those under the age of 19 and/or pregnant. Application assistance also provided for the Low Income Families (LIF) Program. Also, assistance to complete health visits for infants and children on Medicaid.

Individuals Served/Applications 550

Other Assistance 442

Prenatal Clinic Services

Health Delivery, Inc. provides the Prenatal Clinic services. Patients see midwives for prenatal care and education. Women deliver at Bay Medical Regional Center, Bay City. Program is available to all women in Tuscola County.

Individuals served (combined) 146



Health Services

Women, Infants & Children (WIC)

WIC offers nutrition education and coupons for supplement food for children under the age of five and pregnant or nursing women. Families must meet income guidelines.

Caseload 1,542

School-Based Programs

Hearing and Vision Screenings are provided by trained technicians in area schools for preschool and school-aged children.

Hearing—Individuals Screened 4,273

Vision-Individuals 5,297

Maternal/Infant Support Services

Maternal Support Services provides visits throughout the pregnancy and up to two months postpartum to assess and teach about pregnancy, childbirth, child care and parenting. Client must be Medicaid Eligible or enrolled in MOMS (non-Medicaid MICH-Care Program). Infant Support Services include home visits for infants up to one year who are eligible for Medicaid. Includes assessment of child's development, nutrition and social needs.

Individuals Served 242

Maternal Child Health (MCH)

Referrals are received from doctors, and hospitals after delivery. Referrals and birth abstracts are screened for risk factors by phone or mail and referred to other services as needed. Congratulation letters are sent to new mothers.

Referrals 582

Mail contacts 525

Immunizations

Reduces vaccine preventable diseases by providing free or affordable immunizations to all people from birth through adulthood.

Client's 3855

Flu Vaccine 825

Pneumococcal Vaccine 48

TB Skin Tests 488



Health Services Continued

Reproductive Health Family Planning

Provides counseling, birth control supplies, pregnancy testing, and sexually transmitted disease information to men and women of child bearing age.

Individuals Served 1675

Geriatric Services

Provides a community based program focusing on maintaining independence, preventing risks to health and well being and developing strategies to meet the health and medical needs of mature adults.

Services Provided 51

Presentations 7
Participants 79

Colorectal Cancer Prevention Education Program

This project is a collaborative Colorectal Cancer Prevention Education project between Hills & Dales Hospital and the Tuscola County Health Department. This project was developed in response to a priority of the Michigan Cancer Consortium (MCC). The project is supported by the Michigan Public Health Institute and the Michigan Department of Community Health with funds from the Center for Disease Control. The focus of this project is to educate county residents between the ages of 55-74 regarding colorectal cancer prevention.

Abstinence Program

Through a grant from MDCH, we promote abstinence among young people across the county. The goal of the Abstinence Program is to positively impact the lives of youth ages 9-17 and their families through health promotion. These activities promote abstinence from sexual activity and discourage any illegal use or misuse of alcohol, tobacco, and other drugs in the community. This is accomplished through After School Programs and Day Camps.



Communicable Disease

The philosophy of the Communicable Disease (CD) Program is to reduce the incidence of communicable disease and infections through investigation, data collection/entry and analysis, case management, education, treatment, referral for care, feedback to providers, reporting of illnesses, and enforcement of the laws, rules, regulations and requirements in accordance with the Michigan Public Health Code Act 368 of 1978 and Michigan's Communicable Disease Rules, February, 2001.

Campylobacter	9	Hepatitis A	1
Chickenpox	23	Hepatitis B	5
Cryptosporidiosis	1	Histoplasmosi	0
EColi 0157	1	Kawaski	1
Flu Like Disease	653	Legionellosis	1
Giardiasis	4	Meningitis Aseptic	12
Guillain Bar	0	Salmonellosis	4
Hep C Acute	0	Shigellosis	1
Hep C Chronic	0	Strep Invasive	2
Hep C Unknown	0	TB Active Case	1
Animal Bites	70	Rabies (Bats)	2