

# TUSCOLA TRACKER

TCHD Newsletter  
January-March



## Monthly Observances

### January

- Cervical Health Awareness Month
- Radon Action Month
- Glaucoma Awareness Month
- Birth Defects Awareness Month

### February

- American Heart Month
- Eating Disorder Awareness Week
- Condom Awareness Day
- Cancer Prevention Month

### March

- Colorectal Cancer Awareness Month
- Brain Injury Awareness Month
- Kidney Month
- Disability Awareness Month

## TOPICS

- Hearing/Vision
- Offsite Clinics
- Pertussis
- Heart Month
- HPV
- 2023 STI Surveillance
- CSHCS Camp Scholarship
- Radon Month
- Maternal Infant Health
- CD Report

 1309 Cleaver Rd. Caro, MI

 989-673-8114

 [www.tchd.us](http://www.tchd.us)



Permanent hearing loss is one of the most common birth defects in the U.S. Even though 97% of babies have their hearing screened at birth in Michigan, hearing loss can occur at any time in a young child's life. There are a number of ways to identify hearing loss.

The hearing screening performed at THCD is typically conducted by using an audiometer, which is a calibrated electronic instrument for measuring hearing thresholds for air and bone conduction.



Some children with developmental delays may be unable to screen with the audiometer. Because the audiometer headphones have magnets, children with digitally programmable shunts or other implanted medical devices including insulin pumps or continuous glucose monitors may be affected by the magnets. These children are recommended to use a different screening method.

When an audiometer is not suggested, TCHD will test for Otoacoustic Emissions (OAEs). OAEs are the sounds measured in the external auditory canal that are produced by the outer hair cells in the inner ear. These sounds, or emissions, are evoked by acoustic stimuli presented to the ear through a probe placed in the ear canal. The outer hair cells respond to the stimuli by vibrating. The vibration produces a very quiet sound that echoes back into the middle and outer ear where a sensitive microphone housed within the probe records the sound. OAE screening does not diagnose a hearing loss, but rather identifies those children who need further medical or audiological assessment.



## HEARING & VISION SCREENINGS

Sometimes your child may get missed for hearing or vision screenings at school. We offer FREE screenings at the health department by appointment-Please call us so we can ensure your child has optimal hearing and vision so their learning doesn't skip a beat!

| Hearing & Vision Screening Requirements |  |  |
|---|---|--|
| Pre-school                              | X   | X  |
| Kindergarten Entry                      | X   | X  |
| Kindergarten                            | X   |  |
| 1st Grade                               |   | X  |
| 2nd Grade                               | X   |  |
| 3rd Grade                               |   | X  |
| 4th Grade                               | X   |  |
| 5th Grade                               |   | X  |
| 7th Grade                               |   | X  |
| 9th Grade                               |   | X  |

Call for your screening appointment

**989-673-1717**



The cancers caused by the Human Papillomavirus (HPV) go beyond the cervix. HPV-positive oropharyngeal cancer has dramatically increased in recent years. Other cancers linked to HPV include penile, anal, vaginal and vulvular.

There are over 100 varieties of the infection and besides cancers, some HPV infections can cause warts.

In most cases, the body's immune system takes care of the infection without lasting consequences. For extra precaution, the HPV vaccination is recommended for both males and females to protect against cancers and warts.

## Cervical

- Estimated 91% of cervical cancer cases from HPV

## Anal

- Estimated 91% of anal cancer cases from HPV

## Vaginal

- Estimated 75% of vaginal cancer cases from HPV

## Oropharyngeal

- Estimated 70% of oropharyngeal cancer cases from HPV

## Vulvular

- Estimated 69% of vulvular cancer cases from HPV

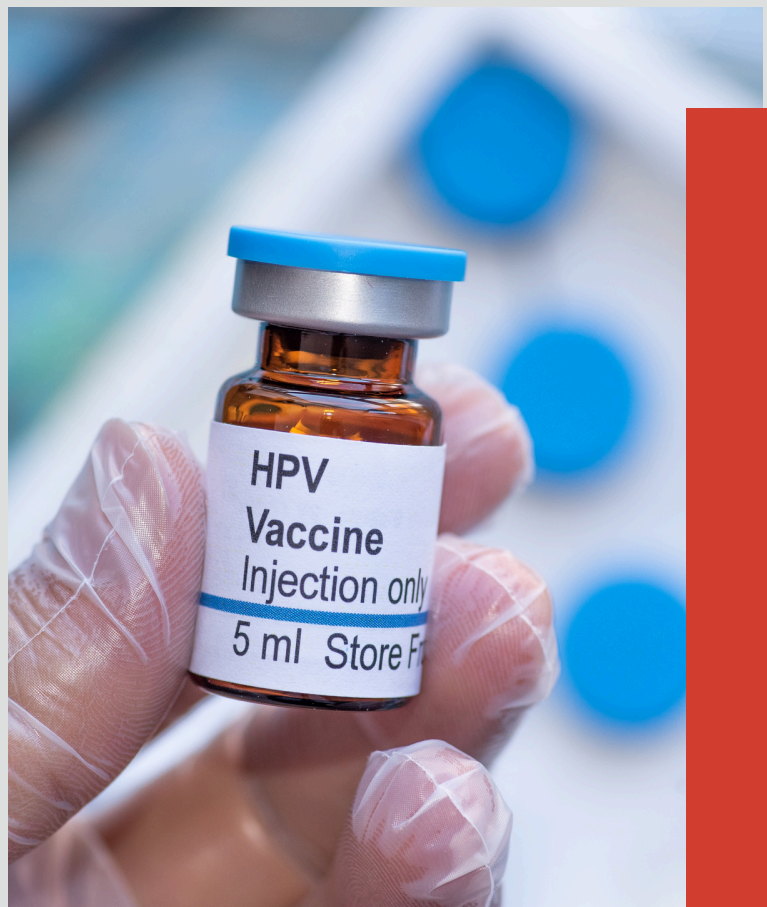
## Penile

- Estimated 63% of penile cancer cases from HPV

Cancers Linked with HPV Each Year

## HPV Vaccine Recommendations

About 10% of women with HPV infection on their cervix will develop long-lasting HPV infections, which puts them at risk for cervical cancer.





## TCHD has **2 offsite vaccine clinics** every month

We can get you and your family caught up with any vaccine you need at our offsite clinics. Please call to schedule your offsite appointment ahead of time so we pack what you need!  
**989-673-8116**

### Cass City Clinic

### Vassar Clinic

 1st Wednesday each month

 12:30pm - 3pm

 Cass City Missionary Church

 3rd Tuesday each month

 9am - 3pm

 First Presbyterian Church



### TCHD Vaccine Text Line

If you have questions about a vaccine, or need to make an appointment,  
**Text us!**

Response time is usually within a few hours.

**989-660-2270**

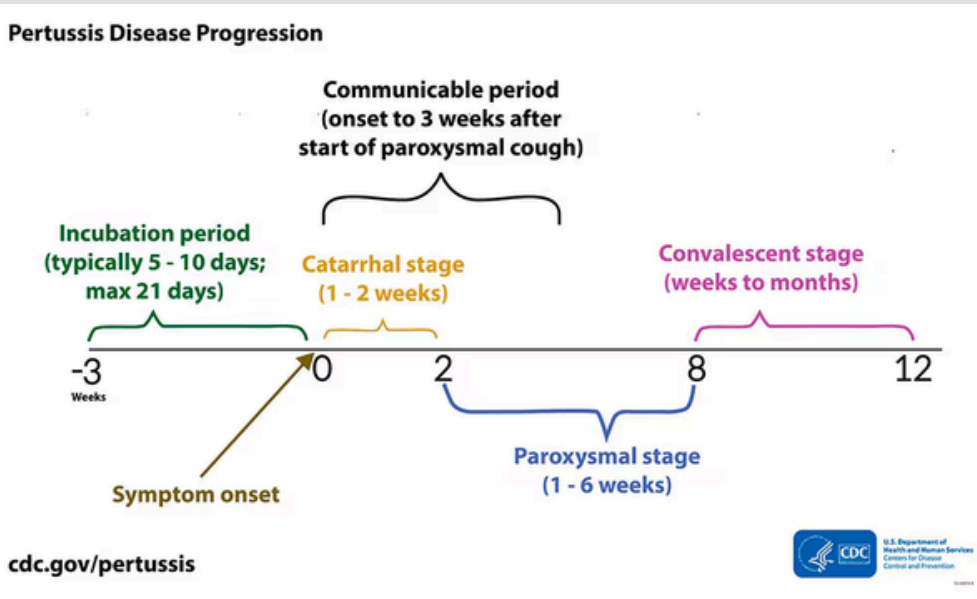


# Whooping Cough

Cases of pertussis have been on the rise, with more than double the number of cases compared to last year.

There are three stages of clinical pertussis:

1. catarrhal (inflammation of mucous membranes),
2. paroxysmal (sudden, intense and uncontrollable bouts of coughing), and
3. convalescent (recovery).



## Stage 1: Catarrhal

Characterized by:

- Coryza (rhinitis)
- Low-grade fever
- Mild, occasional cough (gradually becoming more severe)
- Apnea (in infants)

## Stage 2: Paroxysmal

Characterized by:

- Paroxysms (sudden fit of coughing)
- Long inspiratory effort with high-pitched “whoop” at the end of paroxysmal cough
- Cyanosis (bluish color in skin, lips, nails due to low oxygen)
- Exhaustion
- Vomiting

## Stage 3: Convalescent

Characterized by:

- Gradual recovery
- Less persistent, paroxysmal coughs that disappear in 2-3 weeks

### → Age

In infants, apnea may be the only symptom, and the cough may be minimal or absent.

### → Vaccination Status

The illness can be milder, and the characteristic paroxysmal cough may be absent in anyone who was previously vaccinated.

### → Vaccination Recommendations

DTaP is recommended for all infants and children under 7 with a 5-dose DTaP series, 1 dose at each of the following ages:

2 months, 4 months, 6 months, 15-18 months, 4-6 years.

Give a single dose of Tdap during every pregnancy, preferably during the early part of gestational weeks 27-36.

February is American Heart Month, a time to shine the spotlight on the number one cause of death in America. As a health care professional, you play an important role in helping patients manage and control their health conditions, including hypertension.

There are plenty of ready-made toolkits for providers to help support patients, and can also help your clinical team implement protocols and use data to improve health outcomes.

## Lifestyle Changes Toolkits

Pulse Check: Live to the Beat- Help women learn how to manage their conditions, move more, eat healthier, stress less, and work with their health care team.

Heart-Healthy Steps Campaign Partner Toolkit- Use these messages and tools to encourage adults 55 and older to practice heart-healthy habits that can help lower their risk for heart disease and stroke.

Recipes for a Heart-Healthy Lifestyle- Share these affordable, nutritious recipes with your patients to encourage healthy eating.

## More Toolkits






## Blood Pressure & Heart Health Class for Seniors

Tuscola County Health Department is offering a Heart Health Class for seniors 65 and older. In this monthly class, TCHD Nurse Jacqueline will be talking all about heart health, the importance of monitoring blood pressure, lifestyle factors that affect heart health, and more.

**Attendees will receive a home blood pressure cuff** (one per household).

Registration is required and can be done on TCHD's website, or by calling 989-673-8114.

-  2nd Wednesday each month
-  10:30 am - 11:30 am
-  Tuscola County Health Department



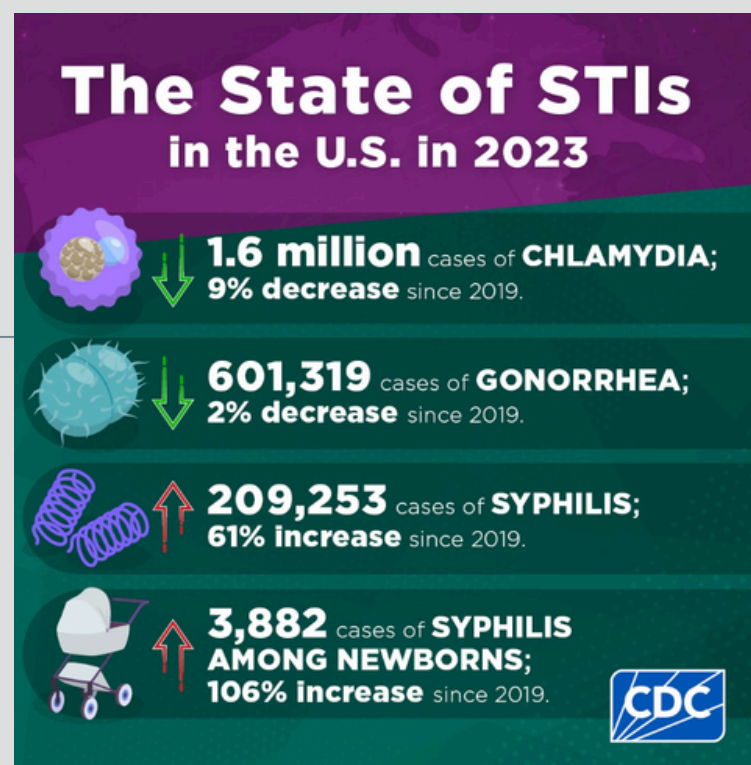
In 2023, over 2.4 million cases of syphilis, gonorrhea, and chlamydia were diagnosed and reported. This includes over 209,000 cases of syphilis, over 600,000 cases of gonorrhea, and over 1.6 million cases of chlamydia. The combined count includes 3,882 cases of congenital syphilis, including 279 congenital syphilis stillbirths and neonatal/infant deaths.



## Highlights

- There were more than 2.4 million STIs reported in the United States in 2023; however, there are promising signs the epidemic may be slowing.
- Gonorrhea dropped for a second year- declining 7% from 2022 and falling below pre-COVID levels.
- Overall, syphilis increased by only 1% after years of double-digit increases.
- Primary and secondary syphilis declined for the first time in more than 2 decades, down 10% since 2022. These cases also dropped 13% among gay/bisexual men for the first time since CDC began reporting trends in this group in the mid 2000s.
- Increase in congenital syphilis cases appear to be slowing in some areas with a 3% increase over 2022 nationally, compared to 30% annual increases in prior years.

## National Overview of STIs in 2023



The 2025 Camp Scholarship Application is now available. Made possible through the Family Center for Children and Youth with Special Health Care Needs (Family Center) with funding from the Children with Special Needs (CSN) Fund.

The purpose of the Camp Scholarship Program is to:

- Increase accessibility to summer camping opportunities for children and youth with special health care needs (CYSHCN).
- Offer opportunities for CYSHCN to engage in the community, gain a sense of belonging, build relationships, and have fun in a safe and supportive environment.
- Provide a respite for parents and other family members of CYSHCN.



## Eligibility

Those up to 21 years old who are enrolled, or eligible to be enrolled in CSHCS qualify for a camp scholarship.

Families with a child not enrolled in CSHCS, or who does not have a CSHCS-eligible diagnosis are encouraged to apply; however, they will need to include a letter from their clinician to verify the diagnosis. This includes children with a developmental/behavioral health condition.

The Family Center will award up to **\$500 per child/per camp** based on the following criteria:

- The camp must be licensed to operate in Michigan.
- Applicants must verify acceptance by the camp by submitting a signed Camp Registration Verification form with their application.
- Multiple applications per family will be accepted.

Applications are considered on a first-come, first-serve basis with a limit of 10 scholarships per camp. Applications will be accepted as long as funding is available.

Please email your complete application to [cschcsfc@michigan.gov](mailto:cschcsfc@michigan.gov). Applications may be sent by mail but may take longer to process.

Family Center/CSHCS  
Michigan Department of Health and Human Services  
P.O. Box 30734  
Lansing, MI 48909

For questions, contact the Family Center at 800-359-3722

**APPLY NOW**





January is Radon Awareness Month. Stop by the Environmental Health Division here at the Health Department to get a **free testing kit**.

Radon is a naturally-occurring radioactive gas.

It can enter your home through the ground and affect air quality.

Radioactive particles can damage DNA and cause lung cancer.

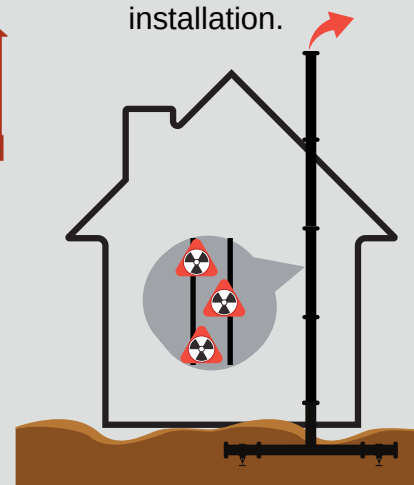
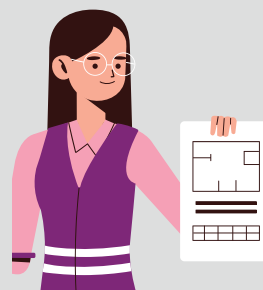
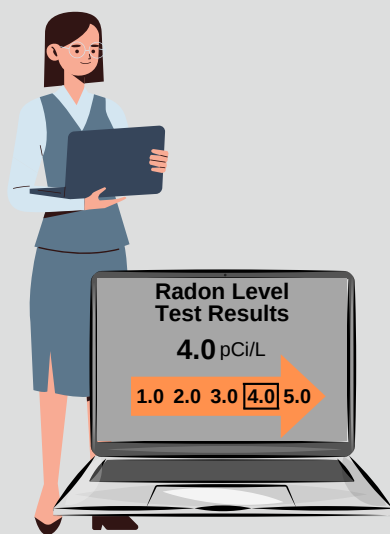
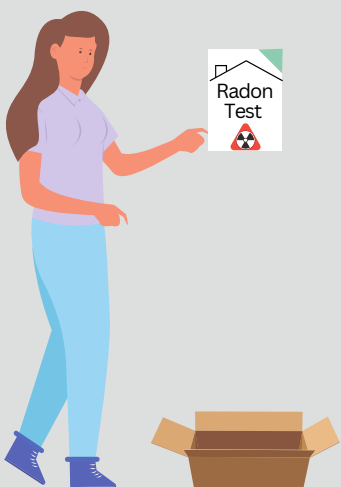
It's invisible and odorless. The only way to know it's present is to test.

Testing your home for radon is easy, inexpensive, and you can do it yourself.

If your test result shows levels of 4.0 pCi/L or higher, you should take action.

Consult a radon mitigation professional about installing a mitigation system.

The National Radon Proficiency Program, and the National Radon Safety Board both have a list of certified contractors for quick/cost-effective installation.



## Michigan Radon Mitigation Service Providers

The Maternal Infant Health Program (MIHP) provides families with all the information and resources your growing family needs to stay healthy and feel supported.

MIHP is an evidence-based home visiting program for pregnant women, infants and their families at no cost to them. Families are partnered with registered nurses and licensed social workers who provide care coordination and education during pregnancy and infancy.

They can also connect you with other MIHP team members like registered dietitians, infant mental health specialists, and lactation consultants.

## Eligibility

- Pregnant women who are eligible for Medicaid.
- Infants up to 12 months of age and their caregivers who are eligible for Medicaid. MIHP services for enrolled infants may continue up to 18 months of age based on family need.

## Benefits for Families

- Pregnant women who are eligible for Medicaid.
- MIHP's caring and trusted home visitors connect families to community resources, and provide education and information in the following areas:

|                               |                                    |                              |
|-------------------------------|------------------------------------|------------------------------|
| Prenatal/postpartum care      | Mental health                      | Family planning              |
| Birthing/parenting classes    | Nutrition                          | Immunizations                |
| Breastfeeding                 | Managing chronic health conditions | Social support               |
| Community resources           | Substance misuse                   | Well-child visits            |
| Housing                       | Transportation                     | WIC and other state benefits |
| Infant health and development | Positive parenting practices       |                              |

## Enhance Your Pregnancy Care with MIHP

MIHP visits do not replace your pregnancy-related care or infant-related care. The program offers additional services and resources to help your family have a healthy pregnancy and a healthy baby.



**ENROLL NOW**



October 1, 2024 through December 31, 2024



**\*COVID 19** 133

**Foodborne**  
 Campylobacter 0  
 Norovirus 1  
 Salmonellosis 2

**Influenza**  
 \*\*Flu Like Disease 660  
 Influenza 10

**Meningitis**  
 Meningitis- Bacterial Other 1  
 Streptococcus Pneumoniae, Inv. 2

**Other**  
 CPO (Formerly CP-CRE): 0  
 \*\*Gastrointestinal Illness 342  
 \*\*Head Lice 53  
 Legionellosis 0  
 Psittacosis 0  
 \*\*Strep Throat 72

**Rabies**  
 Potential Exposure & PEP Investigations 1

**Tuberculosis**  
 \*Latent Tuberculosis Investigations 2

**STI**  
 Chlamydia 16  
 Gonorrhea 3  
 HIV 0  
 Syphilis 0

**Vaccine Preventable Disease**  
 Pertussis 4  
 \*Rubella 0  
 Shingles 0

**Vectorborne**  
 Lyme Disease 0

**Viral Hepatitis**  
 Hepatitis B, Chronic 0  
 Hepatitis C, Chronic 0

